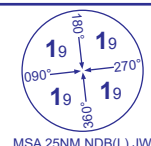
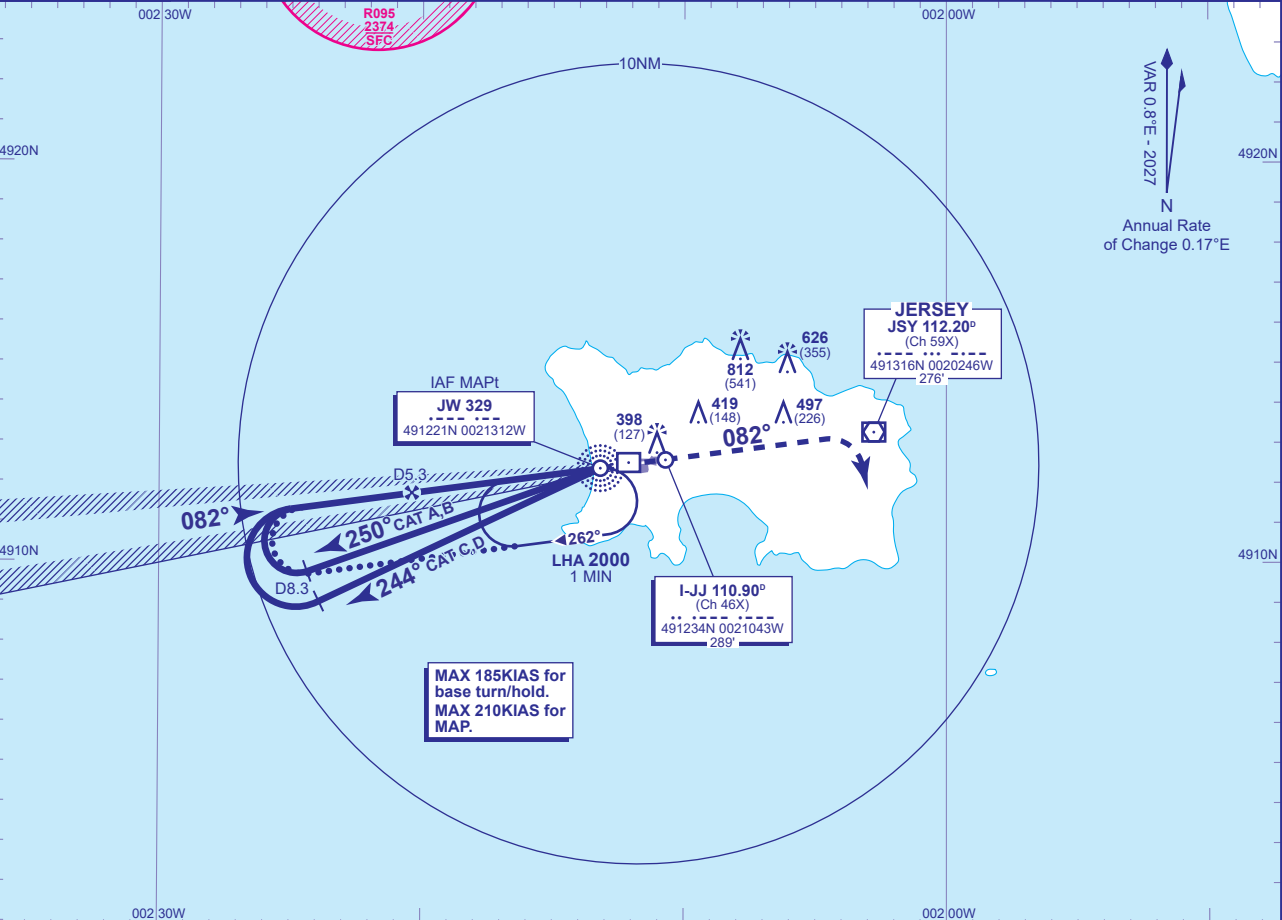


INSTRUMENT APPROACH CHART - ICAO

JERSEY
LOC/DME/NDB(L)
RWY 08
(ACFT CAT A,B,C,D)

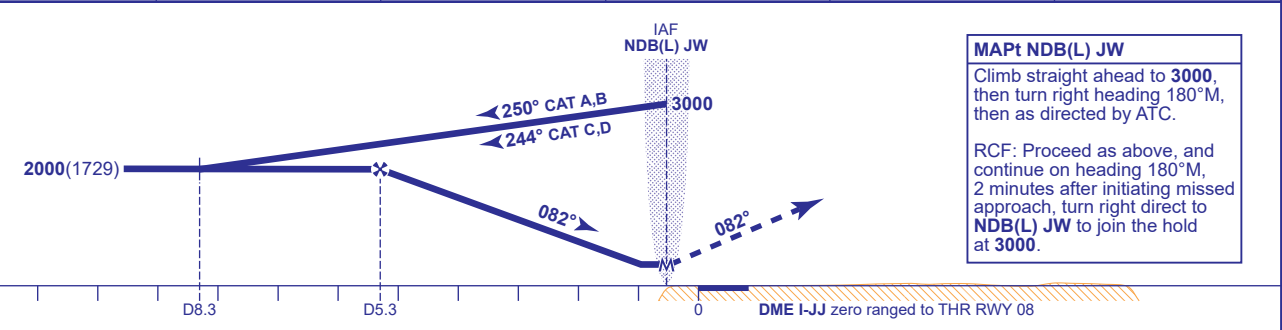


ATC	125.205, 120.450	JERSEY CONTROL	AD ELEVATION	277	LOC/DME/ND(B)L RWY 08 (ACFT CAT A,B,C,D)
APP	120.305, 118.555	JERSEY APPROACH	THR ELEVATION	271	
TWR	119.455	JERSEY TOWER	OBSTACLE ELEVATION 812 AMSL (541) (ABOVE THR)	TRANSITION ALTITUDE 5000	
	121.905	JERSEY GROUND			
ATIS	134.680	JERSEY INFORMATION			
			BEARINGS ARE MAGNETIC		



RECOMMENDED PROFILE Gradient 5.2%, 320FT/NM

DME I-JJ	5	4	3	2	1
ALT(HGT)	1920(1649)	1600(1329)	1280(1009)	960(689)	640(369)



Aircraft Category	A	B	C	D	Rate of descent	G/S KT	160	140	120	100	80
OCA (OCH)	WITH DME	590(319)	590(319)	590(319)		FT/MIN	850	750	640	530	430
	NO DME	640(369)	640(369)	640(369)							
VM(C)OCA (OCH AAL)	Total Area	770(493)	770(493)	1210(933)							
	South of RWY 08/26	770(493)	770(493)	1030(753)							

ALTERNATIVE PROCEDURE EXTENDED HOLDING PATTERN (MAX 185KIAS)
Arrive at IAF NDB(L) JW at 3000. Extend the outbound leg of the NDB(L) JW holding pattern to I-JJ D8.3 descending to 2000(1729). Turn right onto the LOC, when established, continue as for main procedure.

AIRCRAFT UNABLE TO RECEIVE DME I-JJ
As for main and alternative procedure except fly outbound for 3MIN (CAT A); 2.5MIN (CAT B); 2MIN (CAT C,D) prior to base turn. When established on LOC descend to MDA.

CHANGE (13/25): MAG VAR UPDATED. MAG HEADINGS.